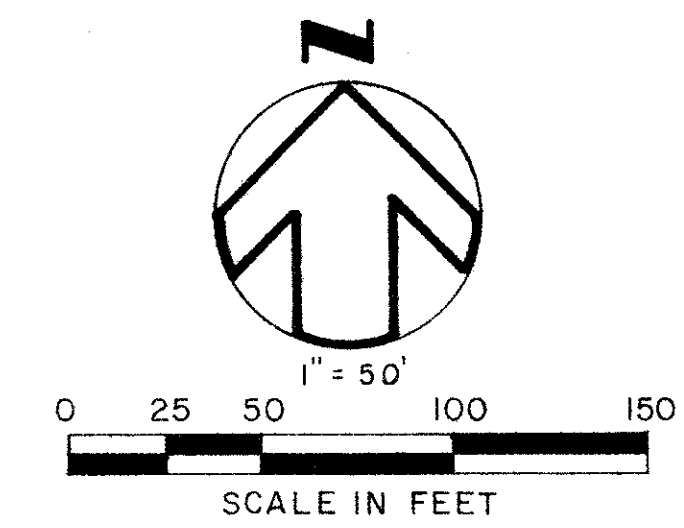


47/54

# BOCA GLADES NO. 2, A P.U.D.

SITUATE IN SECTION 17, TOWNSHIP 47 SOUTH, RANGE 42 EAST  
BEING A REPLAT OF A PORTION OF BLOCK 76 OF  
THE PALM BEACH FARMS COMPANY'S PLAT NO. 3 (P.B. 2, PGS. 45-54)  
PALM BEACH COUNTY, FLORIDA



STATE OF FLORIDA  
COUNTY OF PALM BEACH

THIS PLAT WAS FILED FOR  
RECORD AT \_\_\_\_\_ THE  
\_\_\_\_\_ DAY OF  
1983, AND DULY RECORDED  
IN PLAT BOOK \_\_\_\_\_ ON  
PAGES \_\_\_\_\_ AND \_\_\_\_\_

JOHN B. DUNKLE  
CLERK OF CIRCUIT COURT

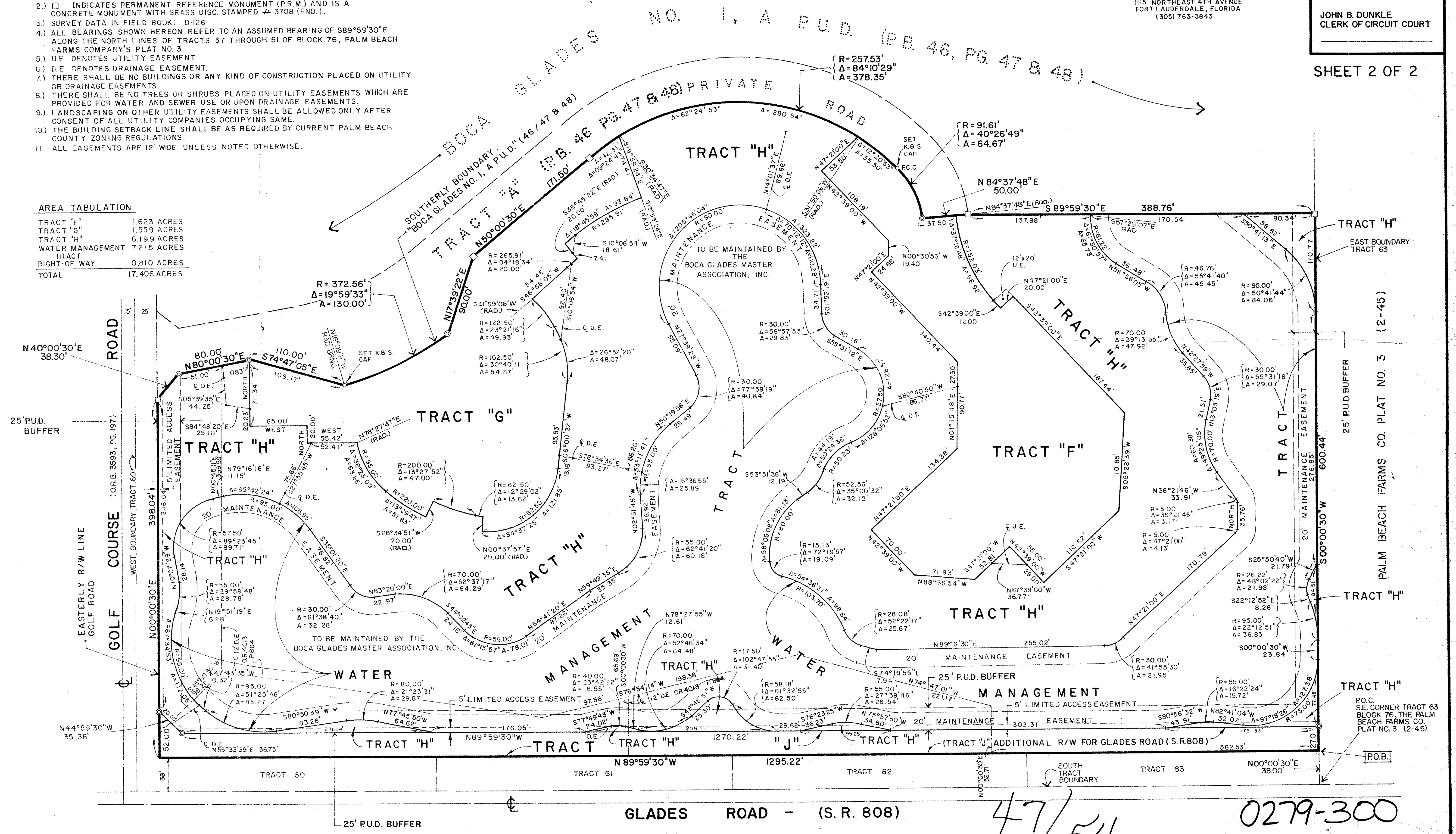
SHEET 2 OF 2

### NOTES:

- 1)  $\odot$  INDICATES PERMANENT REFERENCE MONUMENT (P.R.M.) AND IS A 6" DIA. x 24" CONCRETE MONUMENT WITH A BRASS DISC. STAMPED KEITH AND SCHNARS, # 1856.
- 2)  $\square$  INDICATES PERMANENT REFERENCE MONUMENT (P.R.M.) AND IS A CONCRETE MONUMENT WITH BRASS DISC. STAMPED # 3708 (FND.).
- 3) SURVEY DATA IN FIELD BOOK: D-126
- 4) ALL BEARINGS SHOWN HEREON REFER TO AN ASSUMED BEARING OF S89°59'30"E ALONG THE NORTH LINES OF TRACTS 37 THROUGH 51 OF BLOCK 76, PALM BEACH FARMS COMPANY'S PLAT NO. 3
- 5) U.E. DENOTES UTILITY EASEMENT.
- 6) D.E. DENOTES DRAINAGE EASEMENT.
- 7) THERE SHALL BE NO BUILDINGS OR ANY KIND OF CONSTRUCTION PLACED ON UTILITY OR DRAINAGE EASEMENTS.
- 8) THERE SHALL BE NO TREES OR SHRUBS PLACED ON UTILITY EASEMENTS WHICH ARE PROVIDED FOR WATER AND SEWER USE OR UPON DRAINAGE EASEMENTS.
- 9) LANDSCAPING ON OTHER UTILITY EASEMENTS SHALL BE ALLOWED ONLY AFTER CONSENT OF ALL UTILITY COMPANIES OCCUPYING SAME.
- 10) THE BUILDING SETBACK LINE SHALL BE AS REQUIRED BY CURRENT PALM BEACH COUNTY ZONING REGULATIONS.
- 11) ALL EASEMENTS ARE 12' WIDE UNLESS NOTED OTHERWISE.

### AREA TABULATION

TRACT "F"	1,623 ACRES
TRACT "G"	1,559 ACRES
TRACT "H"	6,199 ACRES
WATER MANAGEMENT TRACT	7,215 ACRES
RIGHT-OF-WAY	0.810 ACRES
TOTAL	17,406 ACRES



47/54

0279-300